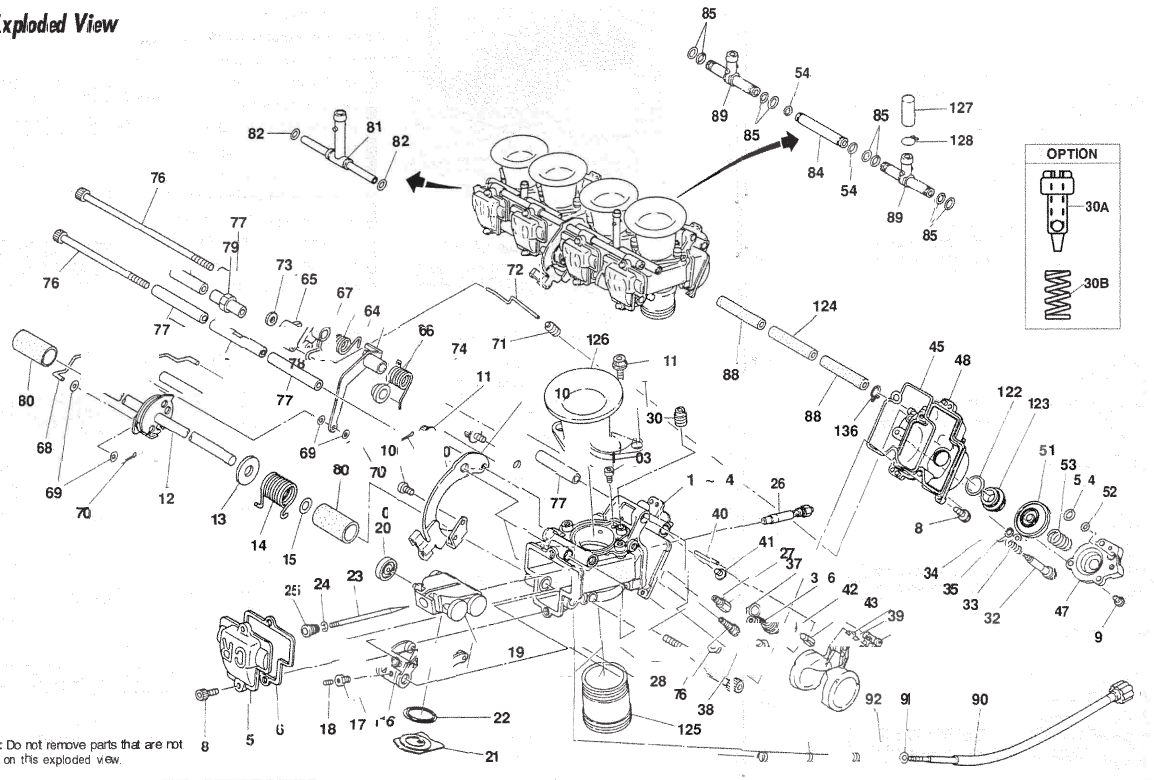


FCR Exploded View



FCR Parts List

NO.	DESCRIPTION	PART NO.	
		35MM - 41MM	32MM - 33MM
5	Top	1030-855-2000	←
6	Gasket	1031-806-2000	1031-805-2000
6A	Gasket (For 41mm)	1031-807-2000	N/A
8	Screw (M4x10)	0136-807-1100	←
9	Screw (M4x8)	0136-808-1100	←
10	Bracket	1190-xxxx-xxxx	←
11	Screw	0136-803-1100	←
12	Throttle Shaft	5025-xxxx-xxxx	←
13	Collar	1118-858-7000	←
14-a	Coil Spring (sgl./dual)	1305-932-2001	←
14-b	Coil Spring (4 curb.)	1305-A30-2000	←
15	Washer	0301-092-7000	←
16	Link Arm Comp.	1061-816-2100	1061-815-2100
17	Hex Nut	0208-811-1100	←
18	Stop Screw	1034-836-2000	←
19	Throttle Valve	N501-20x00	N501-18x02
20	Roller	1119-803-7002	←
21	Plate	1609-802-2101	1609-801-2101
22	Seal	1099-817-2001	1099-816-6001
23	Jet Needle	N427-0Cxxx	N427-90xxx

NO.	DESCRIPTION	PART NO.	
		35MM - 41MM	32MM - 33MM
24	Clip	0403-802-1000	←
25	Set Screw	1421-801-2000	←
26	Main Nozzle (D/D)	1154-835-2100	←
26	Main Nozzle (H/L)	1154-838-8000	←
27	Main Jet	99101-357-xxxx	←
28	Slow Jet	N424-25xxx	←
30	Slow Air Jet	99101-124-xxxx	←
	Old No.	(99101-2F5)	←
30A	Air Screw	1014-817-2000	←
30B	Coil Spring	16052-KM 4-0040	←
32	Pilot Screw	N446-05A00	←
33	Coil Spring	1290-812-2000	←
34	O-ring	16075K G8 90 D-M1	←
35	Washer	0301-803-2000	←
36	Valve Seat (1.5mm - 2.6mm)	N361-03XX1	←
36	Valve Seat (3.2mm - 4.0mm)	N361-04XX1	←
37	O-ring	16358-397-7710-M1	←
38	Screw	0118-804-1100	←

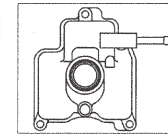
NO.	DESCRIPTION	PART NO.	
		35MM - 41MM	32MM - 33MM
39	Float Comp.	1052-837-2200	←
40	Arm Pin	W9525-25250	←
41	Screw	93500-04008-1H	←
42	Float Valve (1.6- 2.6)	16155-2G8-L100	←
42	Float Valve (3.2-4.0)	1062-814-2101	←
43	Clip	0405-019-1000	←
45	O-ring	1202-846-6000	←
47	Corves	1230-826-2001	←
48	Float Bowl (D/D)	1051-862-2100	←
48	Float Bowl (D/D)	1050-863-2100	←
48	Float Bowl (D/D)	1050-864-2100	←
48	Float Bowl (D/D)	1050-865-2100	←
48	Float Bowl (D/D)	1050-866-2100	←
48	Float Bowl (D/D)	1050-868-2100	←
48	Float Bowl (H/L)	1051-880-2100	←
48	Float Bowl (H/L)	1050-881-2100	←
48	Float Bowl (H/L)	1050-882-2100	←
48	Float Bowl (H/L)	1050-883-2100	←
48	Float Bowl (H/L)	1050-885-2100	←
48	Float Bowl (H/L)	1050-886-2100	←

NOTE: Ask dealer for details if you see xxx-xxx on part numbers.

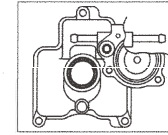
This exploded view is FCR Downdraft Inline 4 center linkage type. If you require another model ask dealer for part number information. See Kehin Tuning Components Section to find part numbers for jetting parts.

NO.	DESCRIPTION	PART NO.	
		35MM - 41MM	32MM - 33MM
51	Diaphragm Comp.	1201-055-2101	←
52	U-ring	W9353-36000	←
53	Coil Spring	1300-142-2000	←
54	O-ring	16178-548-0040	←
64	Link Lever	1100-870-2100	1100-868-2100
65	Link Lever D/D	1100-867-7001	←
65	Link Lever H/L	1100-872-7000	←
66	Coil Spring #1	1305-833-2000	←
67	Coil Spring #2 D/D	1305-939-2000	←
67	Coil Spring #2 H/L	1305-852-2000	←
68	Rod	1458-825-2000	←
68	Rod GasXR Liquid Cool	1458-827-2000	←
69	Washer	0301-136-7000	←
70	Pin	16181-P-C3-7810-M1	←
71	Rubber Cap	1028-825-2001	←
72	Rod (D/D)	1458-826-2000	←
72	Rod (H/L)	1458-829-2000	←
73	Washer	0301-114-1000	←
74	Collar	G1704-241-9900	N/A
76	Bolt	0136-xxxx-xxxx	←
77	Collar #1	N704-010xx	←
78	Collar #2	N80-4-020xx	←
79	Collar #3	N704-030xx	←
80	Rubber Hose	0804-xxxx-xxxx	←
81	Air Vent Joint	1077-826-7000	←
82	U-ring	W9353-65000	←
84	Fuel Joint	1075-xxxx-xxxx	←
85	O-ring	W9351-13057	←
88	Rubber Hose	0804-xxxx-xxxx	←
89	Fuel Joint	1077-xxxx-xxxx	←
90	Idle Speed Screw	1034-837-2100	←
91	Washer	0301-078-1200	←
92	Coil Spring	1300-112-2000	←
100	Screw	0136-804-1100	←
103	Main Air Jet	99101-393-xxxx	N/A
122	O-ring	16075-935-0060	←
123	Drain Bolt	1018-804-2000	←
124	Rubber Hose	0804-437-0001	0804-886-0000
125	Mount Adaptor	N195-xxxx	←
125	Mount Adaptor	1253-XXX-2000	←
126	Velocity Stacks (30MM)	1130-808-7000	1130-809-7000
126	Velocity Stacks (50MM)	1130-807-7000	1130-806-7000
127	Rubber Cap	1038-808-7100	←
128	Clip	W9535-55000	←
138	Clip	W9535-35000	←

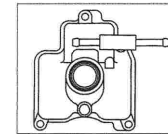
FCR FLOAT BOWL



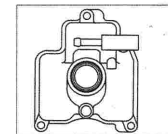
D/D 1050-864-2100
H/L 1050-881-2100



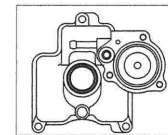
D/D 1050-865-2100
H/L 1050-880-2100



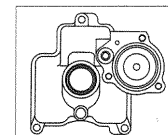
D/D 1050-863-2100
H/L 1050-882-2100



D/D 1050-866-2100
H/L 1050-883-2100



D/D 1050-862-2100
H/L 1050-885-2100



D/D 1050-868-2100
H/L 1050-886-2100