

Hitachi Astemo: Advancing Mobility

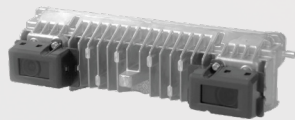
Since its establishment in 2021 through the merger of Hitachi Automotive Systems, Keihin, Showa, and Nissin Kogyo, Hitachi Astemo has been shaping the future of mobility. With a global workforce of 80,000 employees, we are committed to a sustainable society and an improved quality of life by delivering world-leading advanced mobility solutions.

The name Astemo—derived from Advanced Sustainable Technologies for Mobility—reflects our mission to drive innovation in mobility.

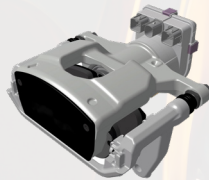
Astemo

Advanced Sustainable Technologies for Mobility

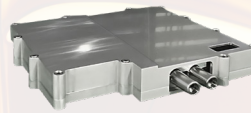
With 139 manufacturing plants and R&D centers across Japan, China, Asia, Europe, and the Americas, we develop cutting-edge technologies for both automobile and motorcycle products with ICE engines and new energy vehicles. Astemo is a leader in e-mobility solutions, offering inverters, AD/ADAS systems, software solutions, and more.



Stereo Camera



Smart Brake



Thin-Type Inverter



Motor

*This is a selection of Astemo's portfolio and does not represent our Aftermarket product range.

Astemo Aftermarket: Quality You Can Trust

In the EMEA region, Astemo's Aftermarket business is managed by Hitachi Astemo Aftermarket Germany GmbH, offering over 5,000 Stock keeping units (SKUs). Our product range—including glow plug controllers, ignition coils, and fuel supply parts—ensures market-leading coverage, distributed directly from Germany.

All products are listed on TecDoc under Hitachi Astemo as a Premier Data Supplier. With a strong portfolio of trusted brands, we deliver technical expertise and innovation, forming the foundation of our advanced mobility solutions.

Astemo

HÜCO

TOKICO

KEIHIN

NISSIN

SHOWA



Discover more at:

<https://aftermarket.hitachiastemo.com/emea>

Astemo

HITACHI HÜCO TOKICO KEIHIN SHOWA NISSIN